

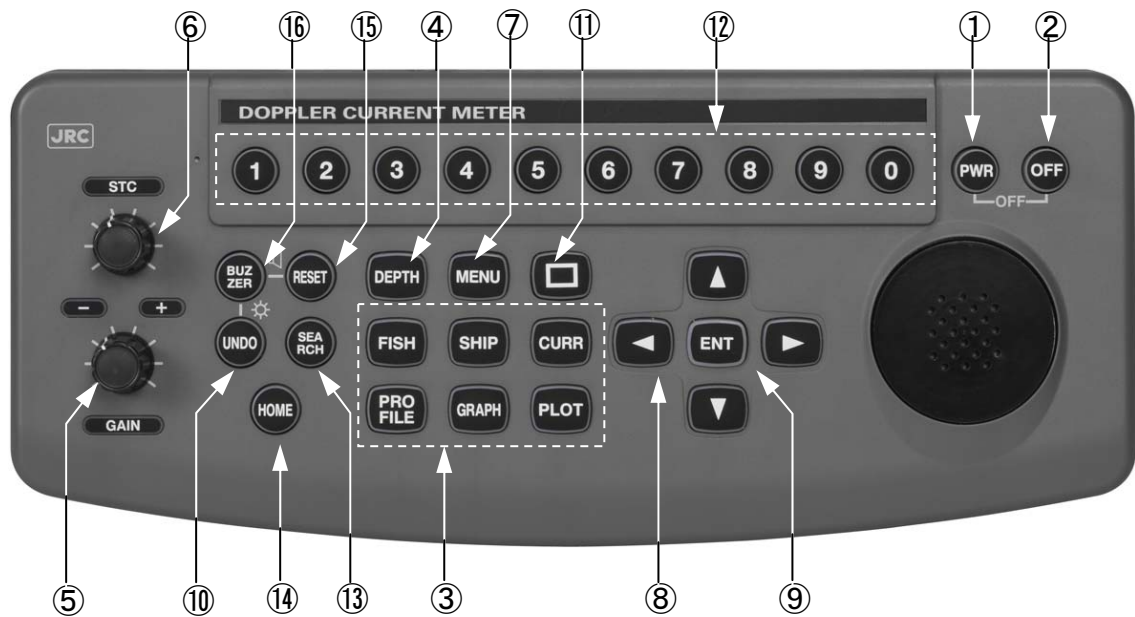
Doppler Current Profiler

JLN-650

OPERATION GUIDE

14 July 2008

Keyboard layout

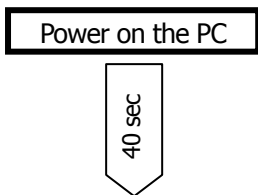


No.	Name	Functions
①	PWR	Turn ON the power. **Inactive by PC based model
②	OFF	Turn OFF the power. (press with PWR key) **Inactive by PC based model
③	CURR, SHIP, FISH PLOT, GRAPH, PROFILE	Directory change screen mode to following modes. Current(Tide) mode, Ship speed mode, Fish finder mode, Track Plotting mode, Graph(History) mode, Profile mode
④	DEPTH	Set measurement depth
⑤	GAIN	Control gain in the fish finding mode
⑥	STC	Control STC in the fish finding mode
⑦	MENU	Display ON/OFF menu
⑧	Arrow key	Select menu item and change settings, and move cursor at track plotting mode.
⑨	ENT	Fix the changed settings in menu.
⑩	UNDO	Restore settings in menu.
⑪	□ (Short cut menu)	Use for short cut to sub-menu. (refer to "5.How to use □key")
⑬	SEARCH	Re-start the searching bottom process after break-off tracking bottom.
⑭	HOME	Reset the own vessel position in center at the track plotting mode.
⑮	RESET	Set starting point of trip log.
⑯	BUZZER	Stop alarm sound.
⑮ ⑯	Sound volume(key-in tones)	Control sound volume : press both ⑮ and ⑯ keys to enter the function, and set value by numerical keys (0,1,2,3)
⑩ ⑯	Dimmer	Control illumination of keyboard: press both ⑩ and ⑯ keys to enter the function, and set value by numerical keys (0,1,2,3)

Basic Operation *only for PC based model (show sample)

The flow give an explanation for basic operation of JLN-650 PC based model.

1. Power ON



Power on the PC, the JLN-650 application program running start automatically, and displays normal operation screen about 40 sec after.



At first, Windows task-bar appears in front of screen.

So, move off the pointer from task-bar and left crick, then task-bar hide in JLN-650 screen.

[note] : The pointer is not appear over JLN-650 screen.

[CAUTION]

! Donot close top cover of PC while running JLN-650 program, because screen resolution will change.
 ! Donot set "DISPLAY MODE" to "MEASUREMENT" in initial setting menu, because PC will runaway.
 MENU > INITIAL SETTING > DISPLAY MODE : [MEASUREMENT **DUMMY**]

2. Power OFF

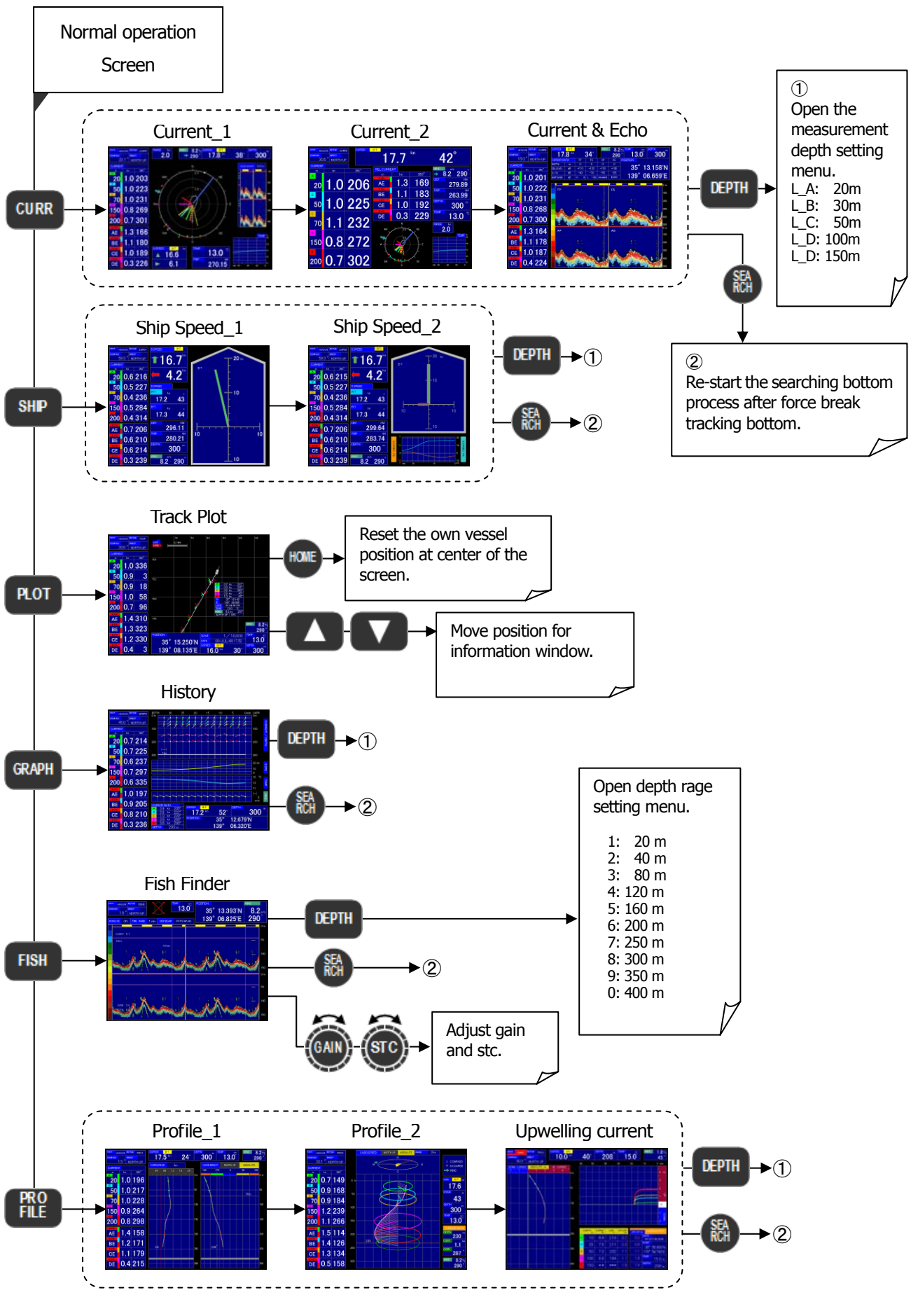


Open windows start-menu by "windows key" on PC's keyboard, and click "Stop JLN650" icon to quit JLN-650 program.

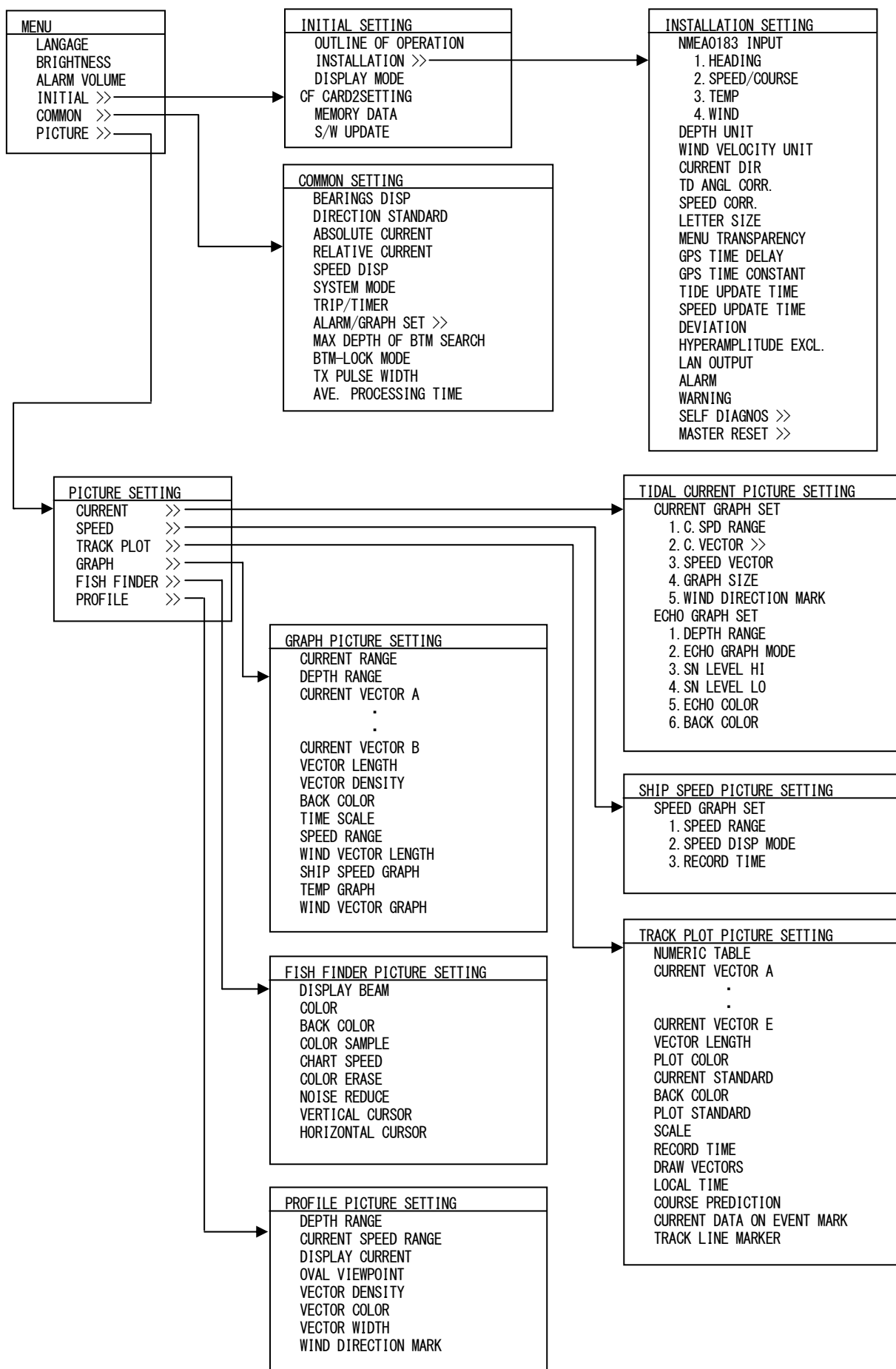
And then, power off the PC according to windows normal shut down sequence.

[note] : Both PWR and OFF keys are inactive

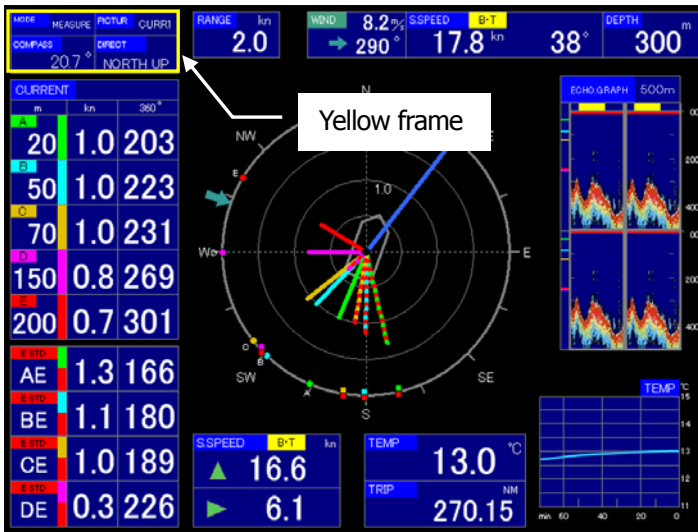
3. Screen mode operating flow

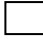


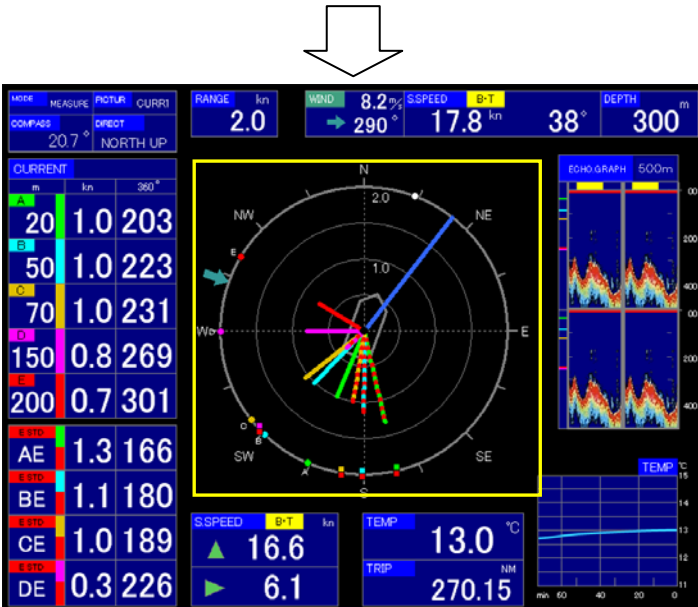
4. Menu tree



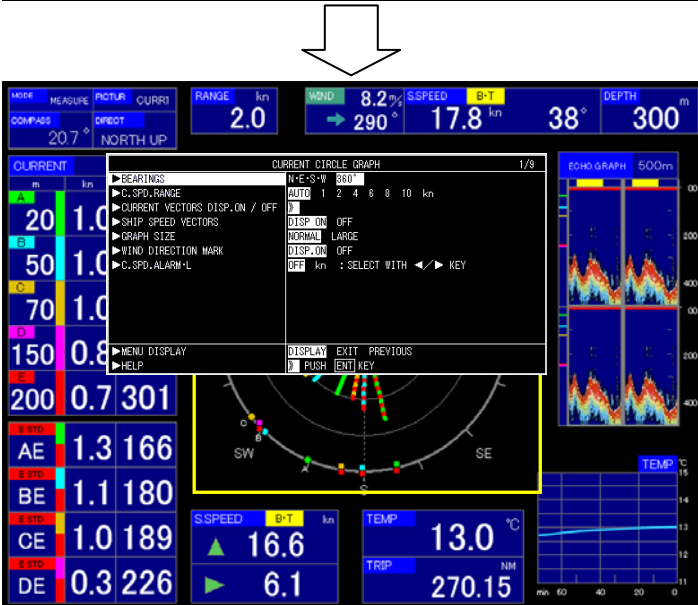
5. How to use  key



Press  key, then appear the yellow frame on screen.



Press Arrow keys to move the yellow frame to a part of you want to change settings.



Press MENU key, then open the menu window of categorized items for selected a part.