

Comant CI 164

Marker Beacon



The most important thing we build is trust

CI 164 Marker Beacon

Lightweight flush mount antenna. Provides for dual marker beacon signal outputs at the antenna, eliminating the need for a separate marker beacon splitter. Antenna is housed in a aluminum enclosure with a glass laminate cover. Internal components are potted in place for mechanical integrity. The CI 164 is designed for curved "crown" surface mounting as is currently used on the Cessna Citation I and II.

Applications

Most aircraft up to and including business jets. Consult your FBO or installation shop for best application information.

Frequencies Covered

75 MHz

Specifications

Electrical

Frequency	75 +/- .15 MHz
VSWR	1.5:1 Max at 75 MHz 5.0:1 Max at 75 +/- .15 MHz
Polarization	Horizontal
Isolation btwn Ports	20 dB Minimum
Impedance RF	50 Ohms
Resistance DC	DC Grounded
Power RF	Receive Only

Mechanical

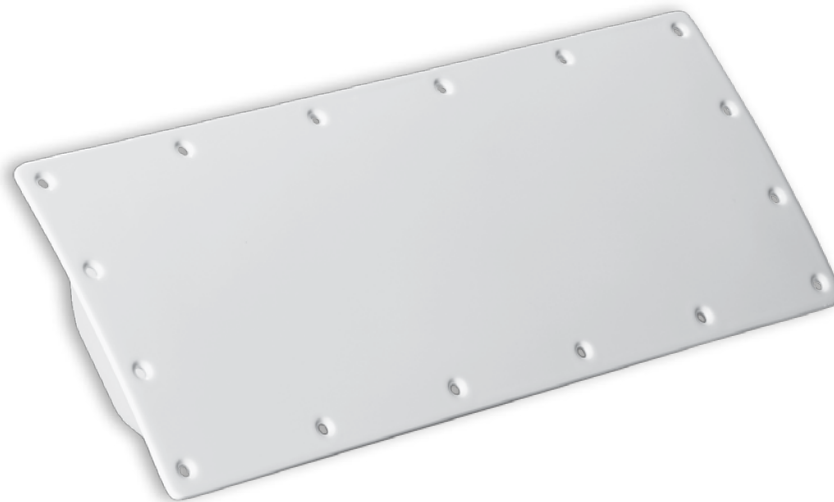
Weight	1.0 lbs
Height	Flush Mount
Construction	Aluminum Housing Glass Lam. Cover
Finish	White Poly. Enamel /Housing Flat Grey
Connector	BNC (Two Ports)

Environmental

Temperature	-55 to 85 C
Altitude	45,000 ft.

Federal Specifications

FAA TSO	C35d
---------	------



WARNING: Use factory supplied drawings and specifications for installation. Refer to FAA AC 43.13-2B for installation guidelines.

Order at:

Tel: 714-870-2420 Fax: 714-870-6294
Email: comantorders@cobham.com