

# EX-Masts

Lightweight, winch and belt-operated telescopic masts

Data Sheet

The most important thing we build is trust

**COBHAM**



# EX-Masts

Lightweight, winch and belt-operated telescopic masts



**Lightweight telescopic EX-masts are mechanical winch and belt-operated masts made of carbon and glass fibre composite material.**

EX-masts are available in three sizes. Please see the table below for more specific information.

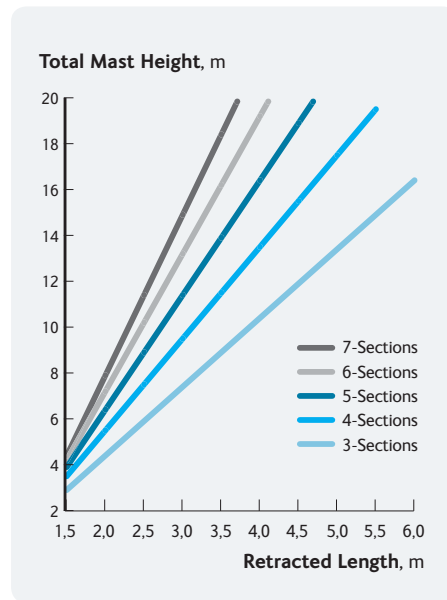
EX-masts can be deployed by one to three persons and are elevated with a hand-cranked winch or by an optional electric

winch power unit (WPU). The entire mast is rotatable by 360 degrees.

Standard designs can be customised according to customer's specifications and requirements and painted in customer specific colours. EX-masts can be supplemented with a wide selection of mounting kits for vehicles and shelters. Sand plate kit or hard ground kit also available.

### Accessories and Ancillaries

- sledge hammer, guy stakes
- ground spike, spike, eye bar, base plate
- guy reels and measuring rope
- accessory bags
- winch, winch power unit (WPU)
- antenna positioners
- vehicle mounting kits
- antenna brackets



Masts listed below are examples. Other lengths with different top load specifications are available at request.

Mast type:	EX105-MASTS			EX128-MASTS			EX141-MASTS		
	8	10	12	10	15	18	15	18	20
Extended height (m)	8	10	12	10	15	18	15	18	20
Transportation length (m)	2.0	2.4	2.7	2.4	3.4	4.0	3.0	3.4	4.3
Vertical top load (kg)	20	20	20	50	40	40	50	50	40
Wind area CxA (m <sup>2</sup> )	0.5	0.4	0.3	1	0.7	0.5	0.7	0.5	0.5
Operational wind speed (m/s)	25	25	25	25	25	25	25	25	25
Mast weight (kg)	20	21	22	27	35	40	41	48	50
Accessories weight (kg)	30	30	40	30	40	40	40	40	45

Can't find what you are looking for? Contact us at:

Mastsystem Int'l Oy trading as Cobham Mast Systems

Muovilaakson tie 8,  
FI-82110 Heinävaara, FINLAND  
Tel + 358 (0)20 775 0817  
Fax +358 (0)13 737 7113  
mastsystems@cobham.com

[www.cobham.com/mastsystems](http://www.cobham.com/mastsystems)